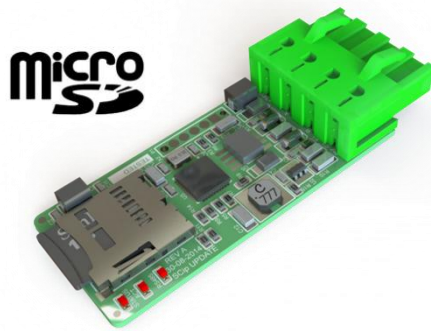


Update Stick™

STUS-1

Installation guide



For use with:



SCD™ series



SCD mini™ series

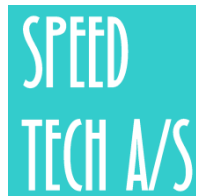


SCD UPS™



SCD UPS mini™

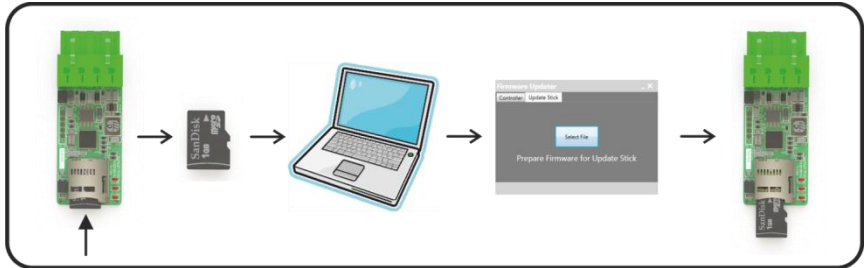
- For easy firmware update of SCD V8 and SCD mini V7 door controller series as well as the UPS and UPS mini.
- Micro SD slot for different firmware images
- Standalone update functionality.



PREPARATION

If you do not already have the firmware in the .cmf file format please follow these steps to convert a .mot file to this.

1. Prepare new file and insert SD card in the computer



Download and install the "Firmware Update Utility" to your computer and start the program.

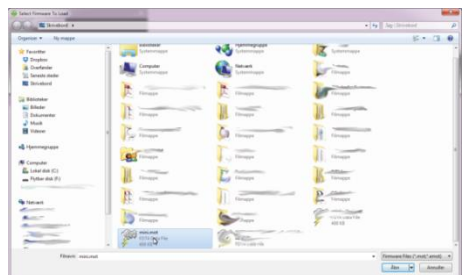
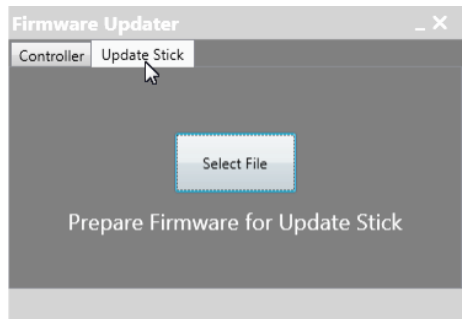
Remove the micro SD card from the Update Stick by gently pushing the SD card as shown on the above image.

Insert the micro SD card in a SD card reader or in an adaptor connected to your computer.

2. Convert the .mot file to a .cmf file:

Run the Firmware Update Utility and select the tab "Update Stick"

Click "Select File" and locate the .mot firmware file.



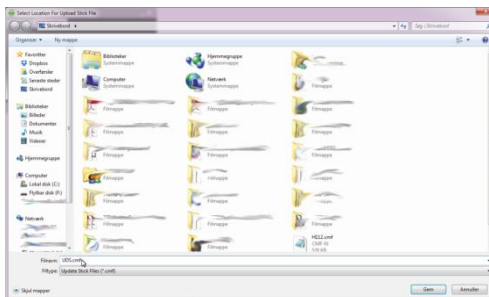
Continued on next page...

PREPARATION

Locate the SD card which under normally conditions would be found under "my computer" and "Removable drive".

Press save to store the firmware image on the SD card.

Remove the SD card from the computer and place it in the Update Stick.



The Update Stick is now ready for uploading firmware to controllers.

Attention!

Please do not place any folders on the memory card.

Use short filenames of max. 8 character.

Do not rename the extension of the file, this will not work.

🔧 FIRMWARE UPDATE & TECHNICAL DATA

3. Initiate firmware update:

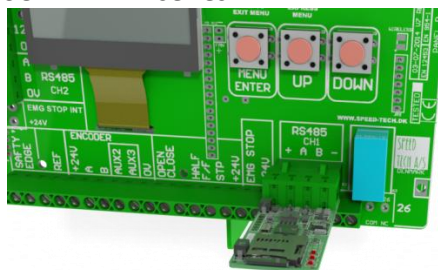
Method 1.

Enter the firmware update menu on the controller, normally located in the "Express menu" and follow instructions on the controllers display to bring the device into "Boot" mode.

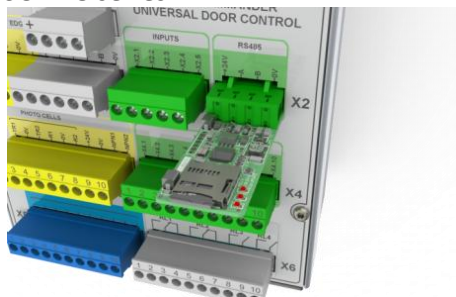
Method 2.

Switch off power and wait for the display backlight to go out. Then press and hold the "UP" button on the device while powering up the device until the display reads "Boot".

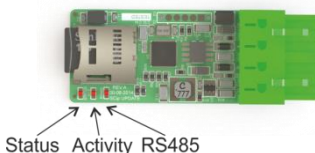
SCD mini V7 series:



SCD V8 series:



Troubleshooting:



Behavior:	Status LED:	Activity LED:	RS485 LED:
Constant light:	Upload completed.	Reading from SD card	Activity on RS485 bus
Flashing light:	Error reading file or problem during upload.		

Technical data:

Power supply:	10 to 30VDC
Dimensions:	63,5 x 23 x 12mm
Weight:	10g