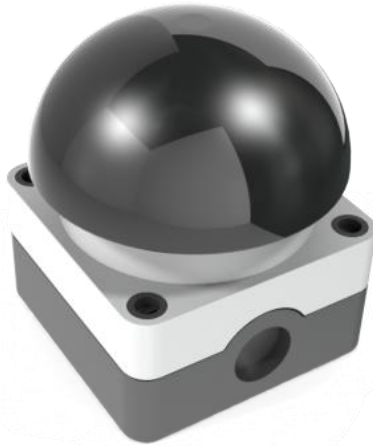


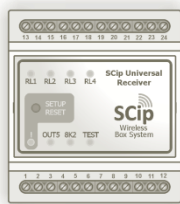
# SCip Palm Button

STPB-1

## Installation guide



For use with:



Universal Receiver

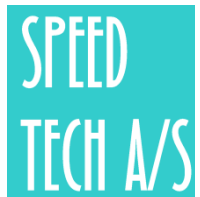


SCD™ series



SCD mini™ series

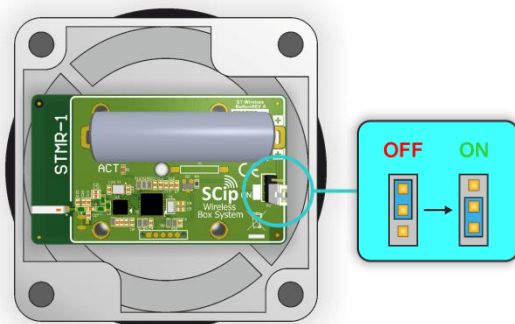
- Extended battery life
- Two way communication
- Wide operating temperature range
- No electro-mechanical contacts
- Robust and waterproof IP 65 rated ABS enclosure for industrial environments



## ACTIVATION

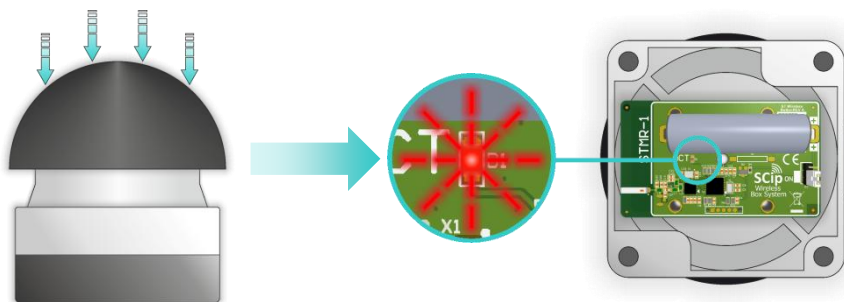
1. Remove the cover and move jumper from "OFF" to "ON" to enable power

The product has an internal battery that must be enabled before use.



2. Push the button to verify that the unit is operational:

The red LED will flash 3 times.



3. Assemble and continue to...

**..Next page:**

Add the Palm Button to a Universal Receiver

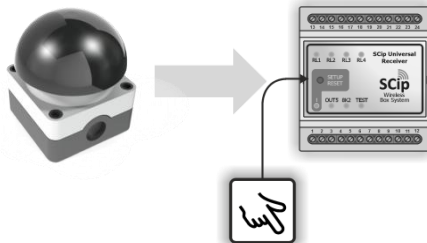
Or

**..Back page:**

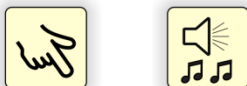
Add the Palm Button to a Speed Commander Door (SCD/SCD Mini)

# ADD TO A UNIVERSAL RECEIVER

How to pair the Palm Button with a Universal Receiver:

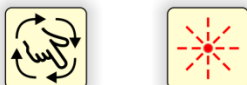


## 1. Activate programming mode



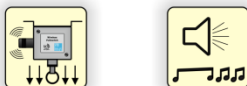
Press setup/reset once

## 2. Select output



Press setup/reset multiple times to select the desired output

## 3. Add



Activate the device to add to the selected output

## 4. Deactivate programming mode



Press setup/reset multiple times to select the ! LED (Or wait approx. 30 seconds)

For pairing with a SCD/SCD mini

- See next page →

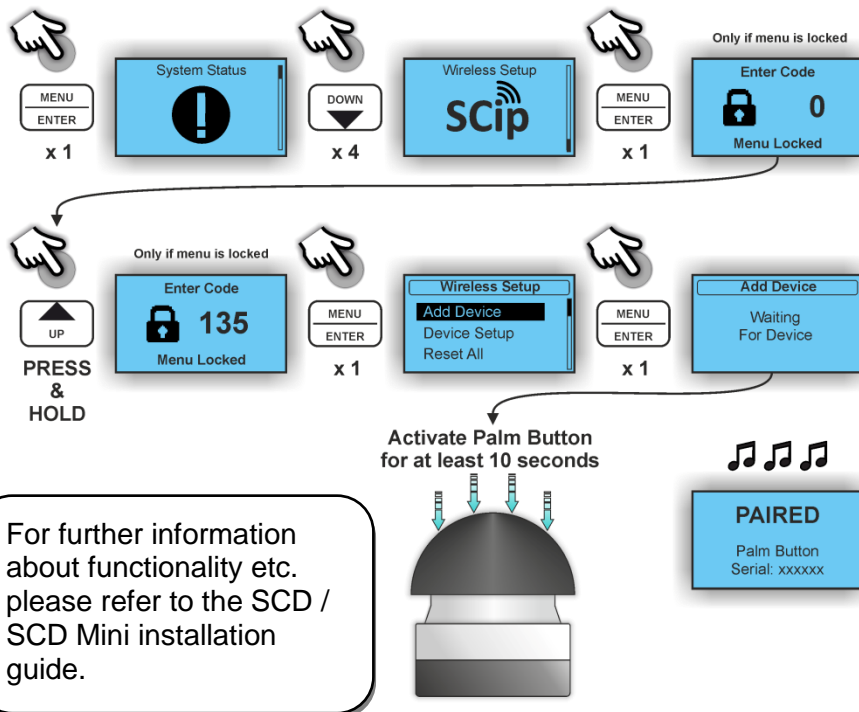
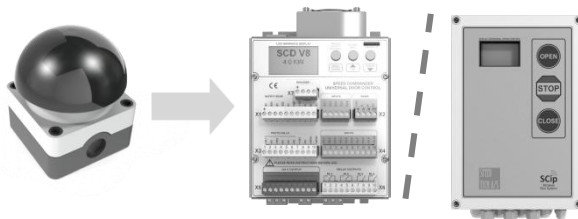
For further information please refer to the Universal Receiver manual.

### Icon description:

	Single press
	Press and hold for more than 1 second
	Press and hold for more than 10 seconds
	Press to step one or more
	Internal beeper audible feedback
	Lamp flashing
	Lamp lit
	Activate SCip client

# ADD TO A SCD OR SCD MINI

How to pair the  
Palm Button with  
en SCD or SCD mini:



## Technical data:

Range (indoor)	15m
Network type/frequence:	2.4GHz ISM band
Temperature range:	-20 to +40°C
Power supply	Battery, Lithium 3.6V (AA/FR6)
Ingress protection class:	65
Dimensions:	<b>Outer dimensioner:</b> 135 x 68 x 80mm (H x B x D)
	<b>Mounting holes:</b> 6 x 4.3mm (slot)
	- for further details please see the bottom of the product
Weight:	220g